

## **ROYAL CHASE HOTEL**

Salisbury Road, Shaftesbury. Tel: 01747 853355

[www.theroyalchasehotel.co.uk](http://www.theroyalchasehotel.co.uk)

Open: Breakfast 7.30 a.m. to 9.30 a.m.

Lunch 12.00 noon to 2.00 p.m.

Dinner 6.00 p.m. to 9.30 p.m.

The Royal Chase Hotel is located about 10 minutes walking distance from the

town centre. Coach parking is available on site.

There is a bar menu and an a la carte restaurant.

Breakfast, morning coffee, lunch, afternoon tea and dinner are all catered for. They are fully licensed.

Prices range from £5 to £30 in the a la carte restaurant.

Up to 150 covers.

Special diets can be catered for.

The Bar and Restaurant are on the ground floor allowing for

disabled access. Disabled toilets are also available.

Booking for the restaurant is advisable.

## **TURNBULLS DELI & CAFÉ**

9 High Street, Shaftesbury. Tel: 01747 858575.

[www.turnbulls-deli.co.uk](http://www.turnbulls-deli.co.uk)

Open: Monday to Saturday 8.45 a.m. to 5.30 p.m.

Turnbulls offers a warm welcome and fresh local food, from breakfast through to afternoon teas. They serve a wide range of modern and traditional dishes from hearty warming soups, meat and cheese platters to ham, eggs and bacon, all freshly prepared. A good selection of cakes and biscuits are also available. They are fully licensed.

In the deli there is a fantastic selection of goods including local fish pate's, wines and pastas. They also have a selection of over 40 cheeses to tempt you!

The café finishes serving food at 5.15 p.m.

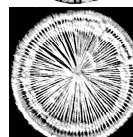
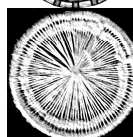
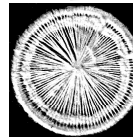
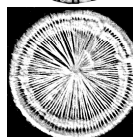
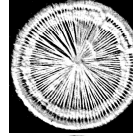
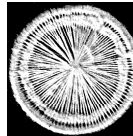
Prices range from £1.50 upwards.

Up to 46 covers.

They can provide for gluten free and vegetarian diets.

There is wheelchair access and a disabled toilet.

Booking is advisable.



## **A SELECTION OF PLACES TO EAT IN SHAFTESBURY**

To make your visit easier, here is a selection from some of the many places to eat in Shaftesbury.

We have detailed information taken from each restaurant or café, including prices, correct at time of printing. For further information or any comments, please contact them directly. We would, however, also be interested in hearing from you.

Information on other places to eat are available from the Shaftesbury Tourist Information Centre on tel. 01747 853514, or [www.shaftesburydorset.com](http://www.shaftesburydorset.com).

## **HALF MOON INN**

Salisbury Road, Shaftesbury. Tel: 01747 852456

Open: Daily 11.00 a.m. to 11.00 p.m.

Food served from 12.00 noon to 9.00 p.m.

The Half Moon is situated about 10 minutes walk from the town centre.

There is coach parking available on site.

Meals are served throughout the day (apart from breakfast), from sandwiches through to classic meals. Smaller appetites are catered for on selected meals. There is full table service, and they are fully licensed. There is a beer garden and children's play area.

Prices start from £2.95 up to £12.95.

Up to 50 covers – a separate room for your group can be provided.

Vegetarian dishes are available.

There are disabled facilities, including access and toilets.

Booking advisable, especially for larger parties (a food pre-order service is available).

## **JOHN PEEL CAFÉ**

52 High Street, Shaftesbury. Tel: 01747 853178

Open: Daily 8.30 a.m. to 6.00 p.m.

This long-established café offers traditional English food, serving a range of English breakfasts, lunches, coffee and cakes. Unlicensed.

The prices range from £2 to £7.

Up to 90 covers.

Vegetarian options are available.

There are disabled facilities available.

## **LA FLEUR DE LYS**

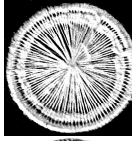
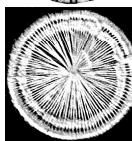
Sunridge House, Bleke Street, Shaftesbury. Tel: 01747 853717

Open: Wednesday to Sunday 12.00 noon to 2.30 p.m.

Monday to Saturday 7.00 p.m. to 10.00 p.m.

English and French cuisine are on offer and all the food is cooked using the finest local ingredients. There is a bar area for pre-lunch or dinner drinks.

At night the restaurant becomes a cosy candlelit room. Service is paramount here and the food is delicious. There are also rooms available if you wish to stay. They are fully licensed.



Prices range from £25 up to £40 for main dishes.

Up to 46 covers.

Special diets can be catered for.

There are disabled facilities.

Booking is advisable.

## **THE MITRE INN**

23 High Street, Shaftesbury. Tel: 01747 853002

Open: Monday to Saturday 10.30 a.m. to 11.00 p.m.

Sundays 12.00 noon to 10.30 p.m.

Food served from 10.30 a.m. to 9.00 p.m.

The Mitre Inn serves traditional pub food, sandwiches, soups and cream teas. Morning coffee is available from 10.30 a.m.

In the summer there is terraced decking to the rear, with plenty of seating and stunning views over the Blackmore Vale. Fully licensed.

Soups from £3.95, sandwiches from £4.50 and main meals from £5.95 to £9.95.

Up to 100 covers.

Vegetarian diets are catered for, and gluten free on request.

There are disabled facilities.

Booking is advisable.

## **THE SALT CELLAR**

Unit C, Gold Hill, Shaftesbury. Tel: 01747 851838

Open: Monday to Saturday 9.00 a.m. to 5.00 p.m.

Sunday 10.00 a.m. to 5.00 p.m.

Located at the top of Gold Hill, this café/restaurant offers fantastic views over the Blackmore Vale.

Food is served from breakfast through to afternoon tea. The menu includes pannini's, sandwiches and specials of the day. They are fully licensed.

Prices for food range from £5 to £10.

Up to 50 covers inside. There is also seating outside.

Disabled access and toilets.

Booking is advisable.